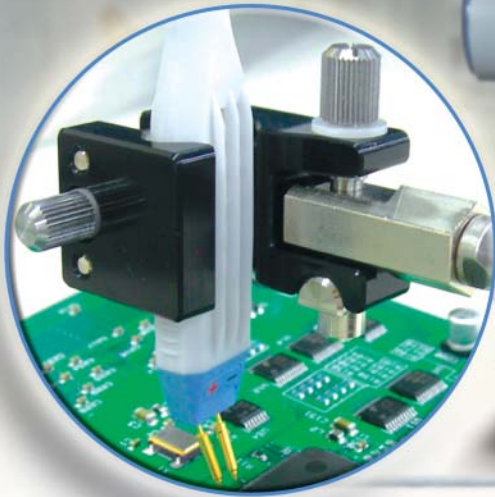


Accessory for Yokogawa digital oscilloscope probes

# 701919 Probe Stand



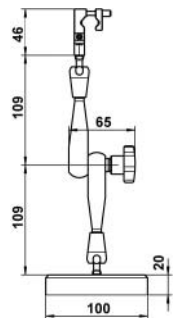
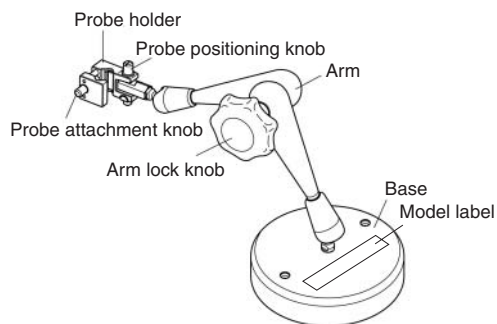
Using oscilloscope probes on today's cramped high-density circuit boards can be challenging. Using a probe stand with a flexible arm and a heavy base to hold and stabilize probes can dramatically simplify circuit board testing.

## Features

- An adjustable arm with three joints and precision up/down positioning offers unlimited probing flexibility.
- The spring-loaded probe holder secures the probe in place.
- A heavy base provides stability for probing in any position.

## Specifications

Holds probes with diameters of 8-13mm  
 Weight: Approximately 1.5kg  
 External Dimensions



## Model and Codes

Product	Model	Description
Probe Stand	701919	Circular Base, 1 arm

[www.yokogawa.com/tm/](http://www.yokogawa.com/tm/)  
 ... and subscribe to "Newswave,"  
 our free e-mail newsletter

# Passive and Active Oscilloscope Probes

All the probes shown below are compatible with the 701919 probe stand

Yokogawa offers a number of passive probes designed for a variety of applications: e.g., probing small areas (PCBs, ICs, etc.) and measuring high voltage signals.

Yokogawa also offers active probes designed to minimize loading and make accurate measurements on fast signals. Differential probes are also available.



## Probe Selection Guide

Model	Bandwidth	Attenuation Ratio	Maximum Input Voltage	Input Resistance/Capacitance (*)	Compensation Range (*)	Cable Length
701913	DC to 2.5GHz (-3dB)	1/10 (Fixed)	±7V	100kΩ/0.9pF	-	1.2m
701923	DC to 2GHz (-3dB)	1/10 (Fixed)	±5V	50kΩ/1.1pF	-	1.2m
701974	DC to 5GHz (-3dB, 1/10)	1/10, 1/20	20Vrms, 40VACpeak	500Ω/0.25pF, 1kΩ/0.4pF	-	0.95m
700939	DC to 900MHz (-3dB)	1/10 (Fixed)	10V (DC+ACpeak)	2.5MΩ/1.8pF	-	1.5m
701943	DC to 500MHz (-3dB)	1/10 (Fixed)	600V (DC+ACpeak)	10MΩ/14pF	15 to 25pF	1.5m
701941	DC to 500MHz (-3dB)	1/10 (Fixed)	400Vrms	10MΩ/10pF	10 to 25pF	1.2m
701942	DC to 350MHz (-3dB)	1/10 (Fixed)	400Vrms	10MΩ/18pF	7 to 25pF	3m
701944	DC to 400MHz (-3dB)	1/100 (Fixed)	1,000Vrms, 6,000Vpeak	50MΩ/7.5pF	10 to 50pF	1.2m
701945	DC to 250MHz (-3dB)	1/100 (Fixed)	1,000Vrms, 6,000Vpeak	50MΩ/7.5pF	10 to 50pF	3m
700988	DC to 400MHz (-3dB, 1/10)	1/1, 1/10	600V (DC+ACpeak)	10MΩ/14pF (1/10)	15 to 25pF	1.5m
700960	DC to 200MHz (-3dB, 1/10)	1/1, 1/10	600V (DC+ACpeak)	10MΩ/14pF (1/10)	14 to 30pF	1.5m
701940	DC to 10MHz (-3dB, 1/10)	1/1, 1/10	600V (DC+ACpeak)	10MΩ/22pF (1/10)	17 to 46pF	1.5m
700929	DC to 100MHz (-3dB)	1/10 (Fixed)	1,000V (DC+ACpeak)	10MΩ/18pF	20 to 45pF	1.5m

\*: Input Capacitance: Capacitance at the tip of the probe. Compensation Range: Compensation Range for the input capacitance of the oscilloscope.

**YOKOGAWA** ◆

**YOKOGAWA ELECTRIC CORPORATION**

Communication & Measurement Business Headquarters /Phone: (81)-422-52-6768, Fax: (81)-422-52-6624

E-mail: tm@cs.jp.yokogawa.com

**YOKOGAWA CORPORATION OF AMERICA**

Phone: (1)-770-253-7000, Fax: (1)-770-251-6427

**YOKOGAWA EUROPE B.V.**

Phone: (31)-33-4641858, Fax: (31)-33-4641859

**YOKOGAWA ENGINEERING ASIA PTE. LTD.**

Phone: (65)-62419933, Fax: (65)-62412606

Subject to change without notice.

[Ed : 01/b] Copyright ©2006

Printed in Japan, 610(KP)

MS-16E